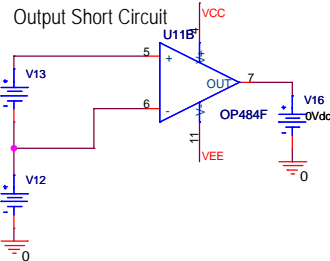
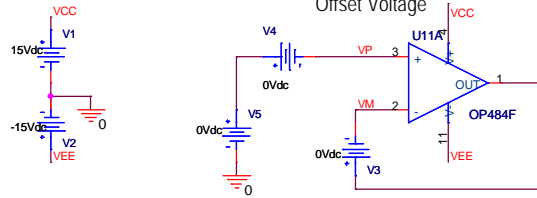
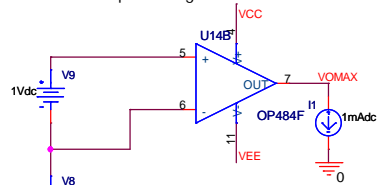


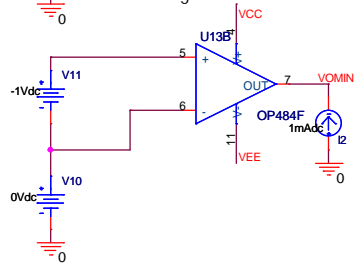
Input Bias Offset  
Input Offset Current  
Offset Voltage



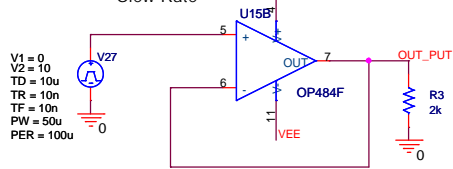
Output Swing



Offset Swing

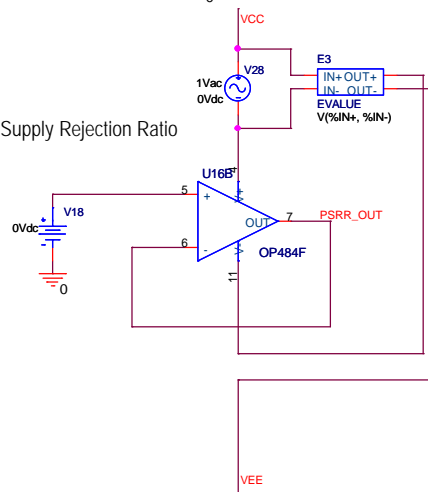


Slew Rate

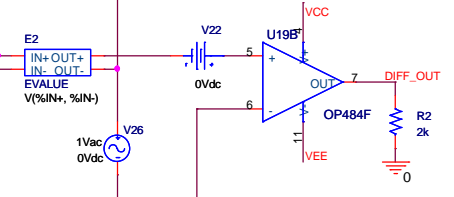
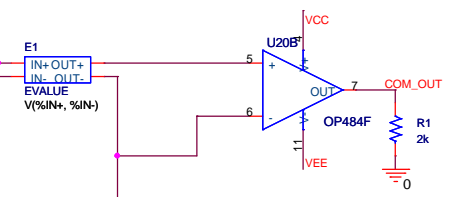
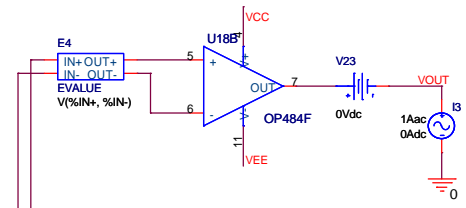
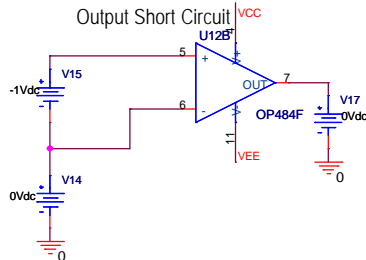


V1 = 0  
V2 = 10  
TD = 10u  
TR = 10n  
TF = 10n  
PW = 50u  
PER = 100u

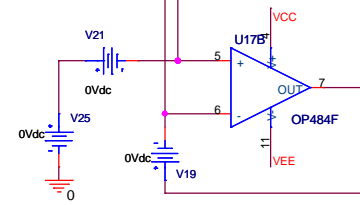
Power Supply Rejection Ratio



Output Short Circuit



Common Mode Rejection  
Gain Bandwidth Product  
Excess Phase  
Open Loop Gain



Title		
<Title>		
Size	Document Number	Rev
B	<Doc>	<RevC>
Date:	Monday, February 14, 2005	Sheet 1 of 1