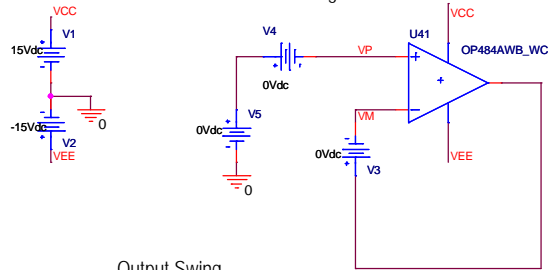
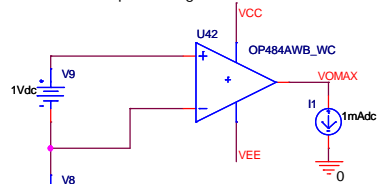


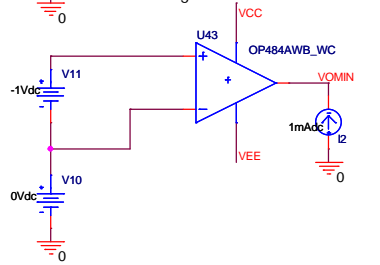
Input Bias Offset  
 Input Offset Current  
 Offset Voltage



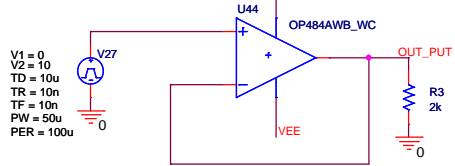
Output Swing



Offset Swing

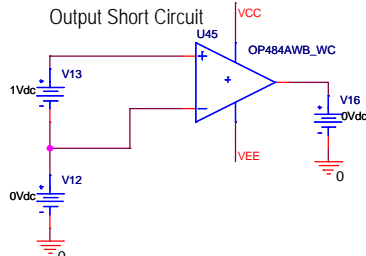


Slew Rate

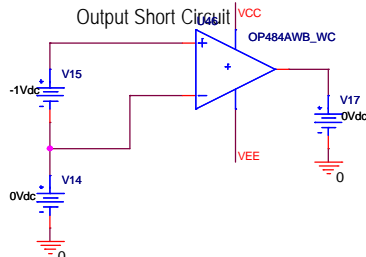


V1 = 0  
 V2 = 10  
 TD = 10u  
 TR = 10n  
 TF = 10n  
 PW = 50u  
 PER = 100u

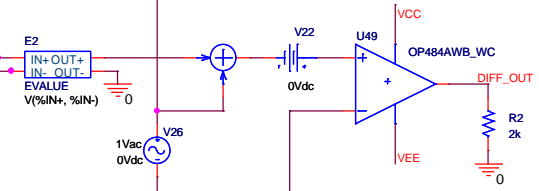
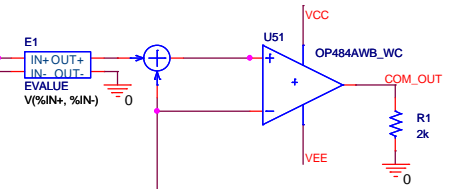
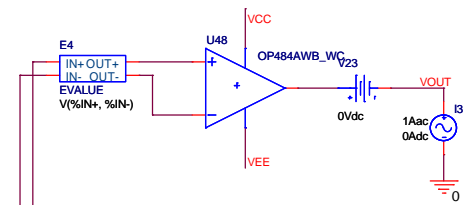
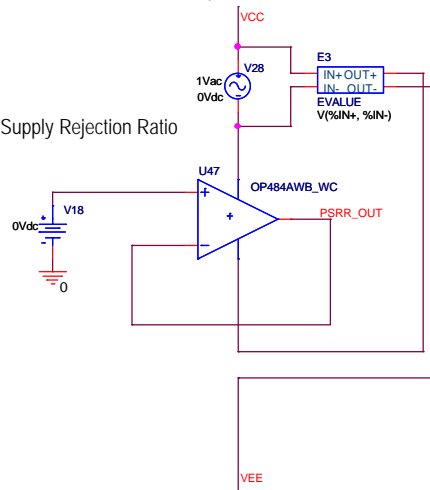
Output Short Circuit



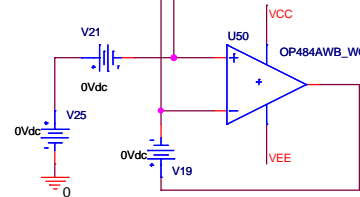
Output Short Circuit



Power Supply Rejection Ratio



Common Mode Rejection  
 Gain Bandwidth Product  
 Excess Phase  
 Open Loop Gain



Title		
OP484MIN_TEST		
Size	Document Number	Rev
B	<Doc>	<RevC>
Date:	Thursday, January 20, 2005	Sheet 1 of 1